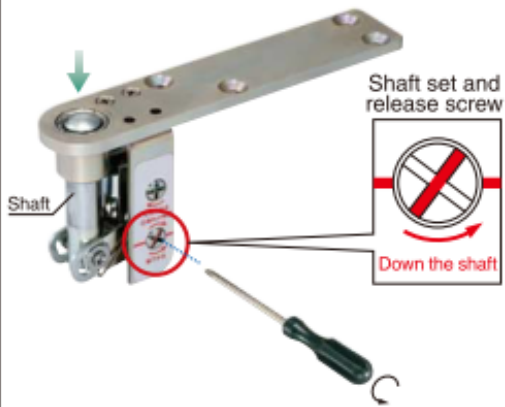


## OPERATION MANUAL

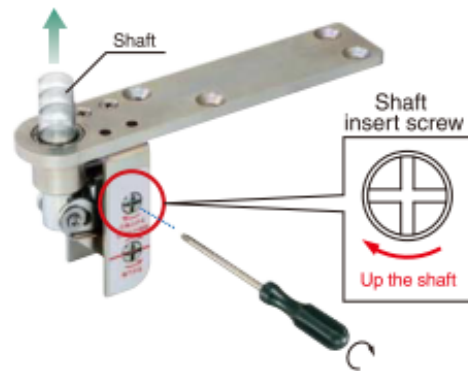
### 1 DOWN THE SHAFT

After install the door frame side and door side top pivot, Down the pivot shaft with the shaft set and release screw. (Turn the shaft set and release screw around 45 degree)



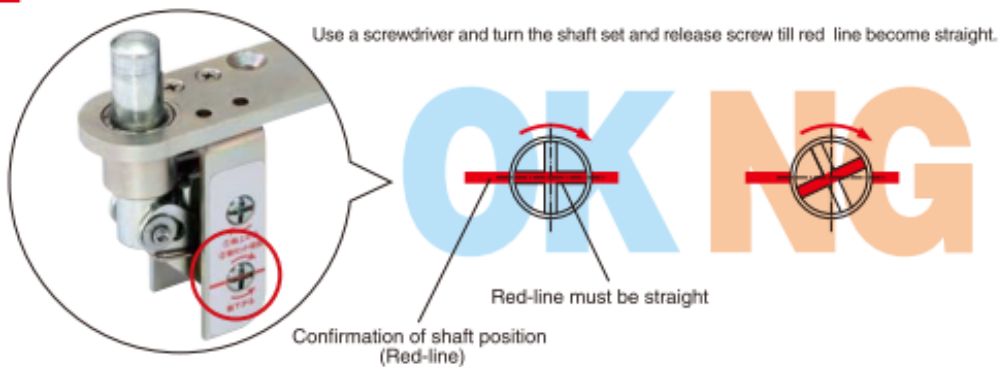
### 2 UP THE SHAFT

Center the top pivot, Use a screwdriver and turn the shaft to insert screw around 30 degree, Then the pivot shaft come out by spring.



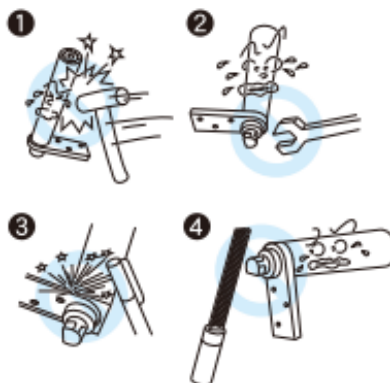
### 3 CONFIRMATION OF THE PIVOT SHAFT POSITION

Use a screwdriver and turn the shaft set and release screw till red line become straight.



### Precautions for Handling

- Do not strike or drop it.
- Do not turn the lower leg.
- Do not joint by welding.
- Do not file the tapered part of the lower leg.
- Be sure to confirm the red-line on the top pivot is straight.



### DECORATED RUBBER PLATE FOR ONE-TOUCH PIVOT

A-8H-W ~ A-16H-W

